

## GlobalProtect VPN: Change Portal Address – Windows

Introduction ..... 1

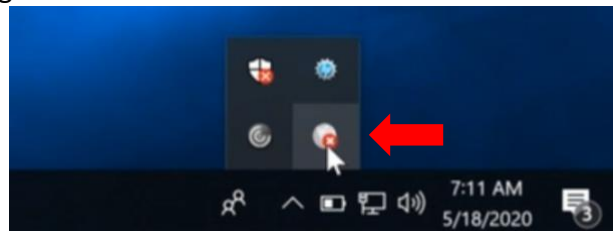
Changing portal address ..... 1

### Introduction

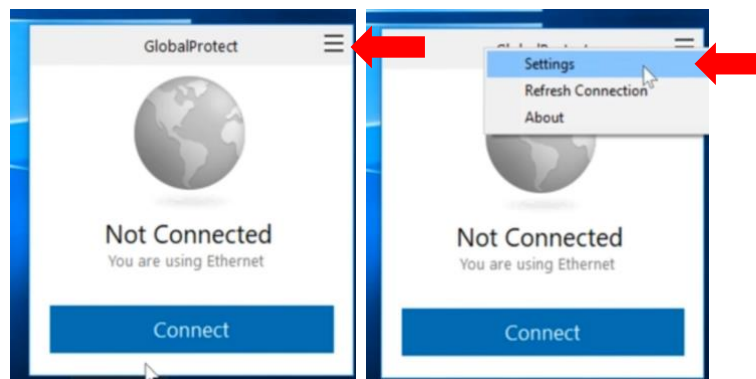
This guide will show how to change the portal address within the GlobalProtect VPN application on a Windows computer. This guide is for individuals who were previously connected to the prior VPN portal, and therefore already have the GlobalProtect VPN application already installed on the computer.

### Changing portal address

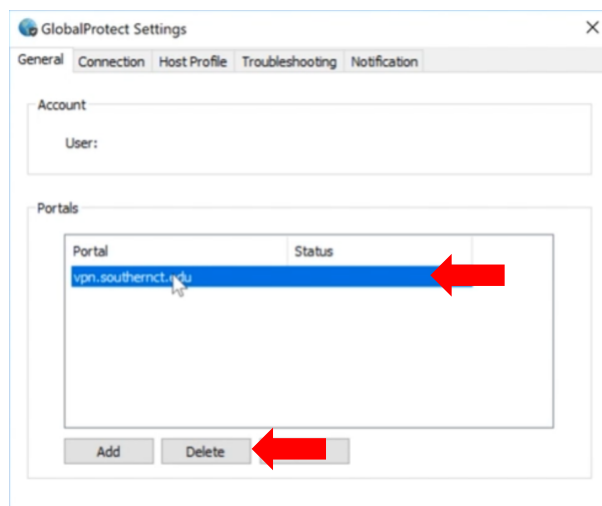
1. Select the GlobalProtect globe icon on the bottom toolbar.



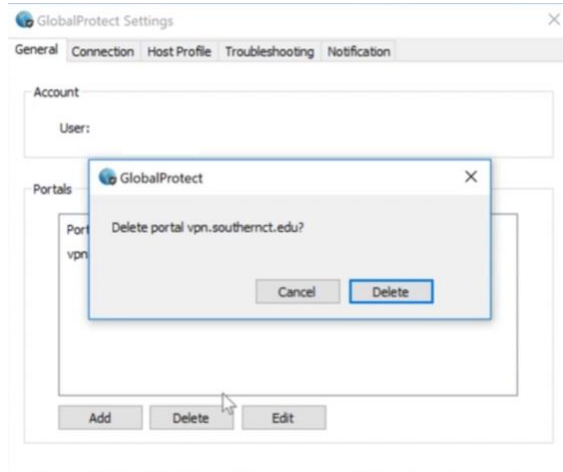
2. Select the three lines, then “Settings”.



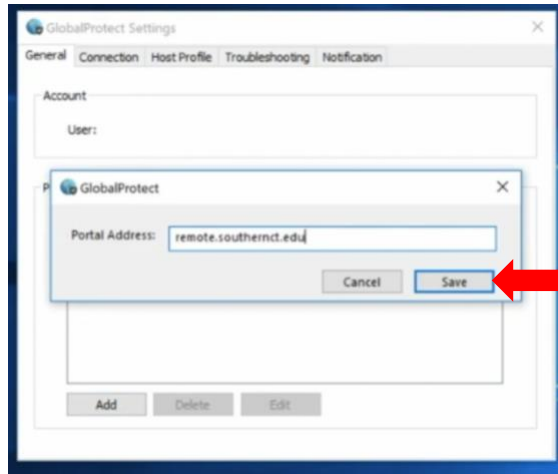
3. Select the previous vpn portal address “vpn.southernct.edu”, then “Delete”.



4. Select “Delete” again to confirm, then “Add”.

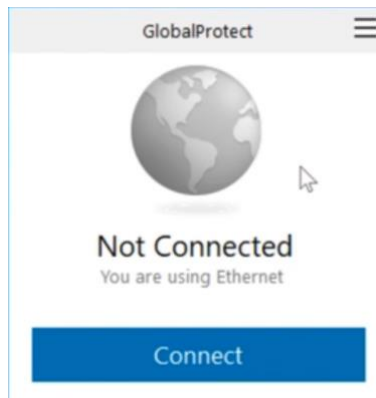


5. Enter the portal address “remote.southernct.edu”, then select “Save”.

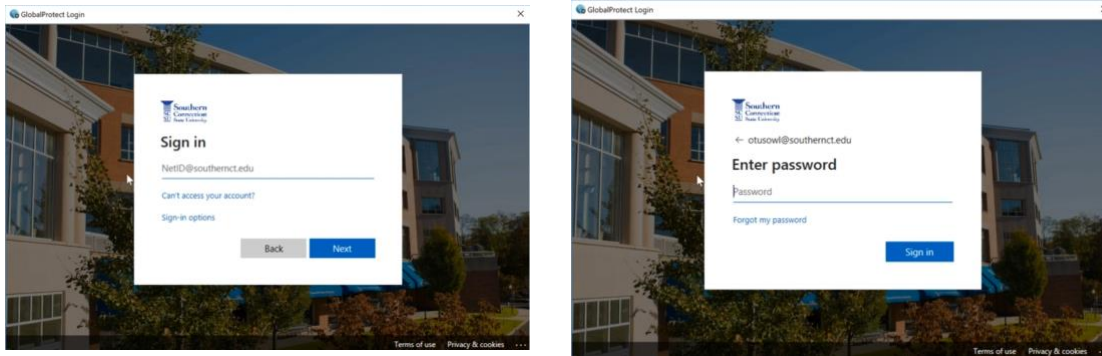


6. Close the window.

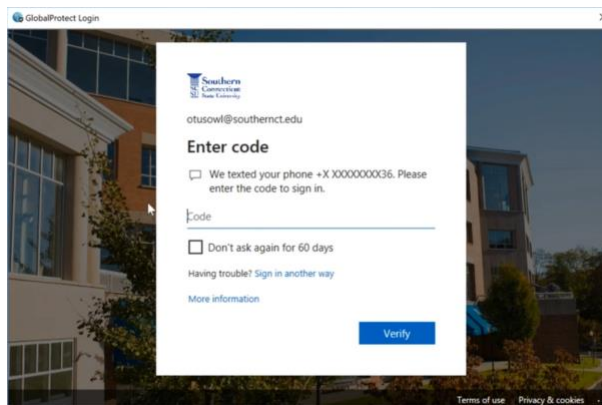
7. Select the globe icon again from the toolbar. Select “Connect”.



8. A log in window will load. Sign in using your full SCSU email address and password.



9. Authenticate your account.



10. Select the globe icon from the toolbar to see when connected.

