

Adobe Sign: Install - Android

Introduction	1
Installing the Adobe Sign app	1
Adobe Sign set up	2

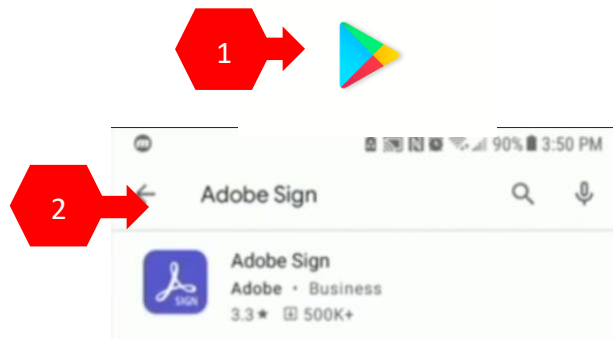
Introduction

Adobe Sign is a cloud-based e-signature service that allows the user to send, sign, track, and manage signature processes using a browser or mobile device. It is part of the Adobe Document Cloud suite of services. SCSU faculty and staff have access to Adobe Sign via the [MyApps](#) portal.

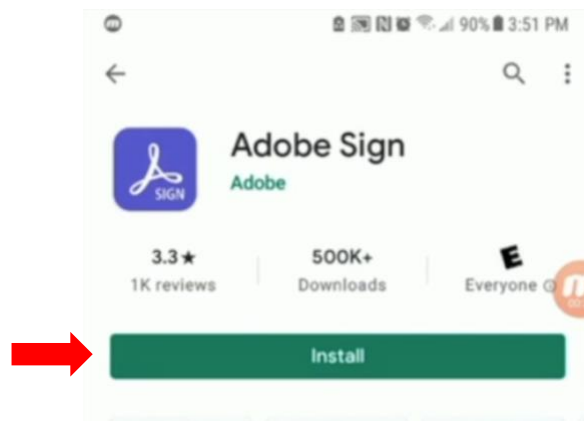
The following steps will walk you through how to install and set up the free Adobe Sign app on an Android device.

Installing the Adobe Sign app

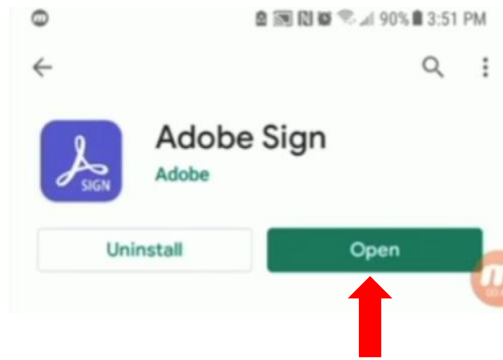
1. Open the Play Store and search for Adobe Sign.



2. Select the Adobe Sign app and click "Install".

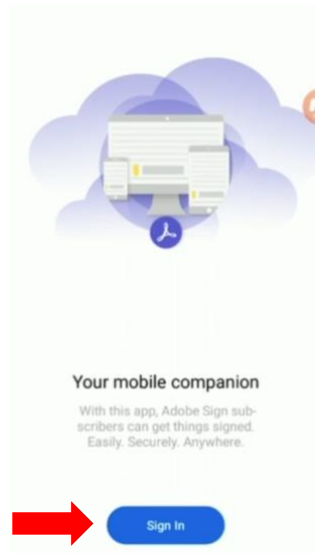


3. Select "Open" when finished.

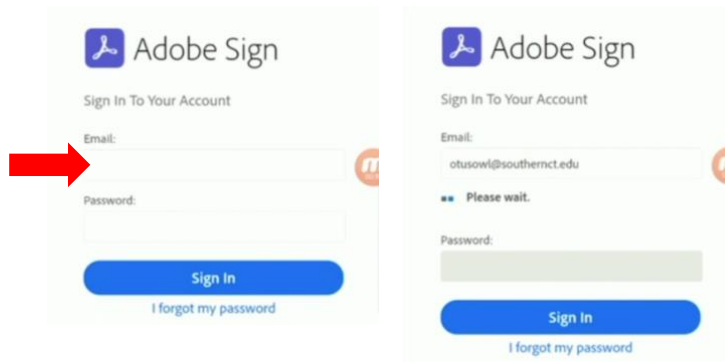


Adobe Sign set up

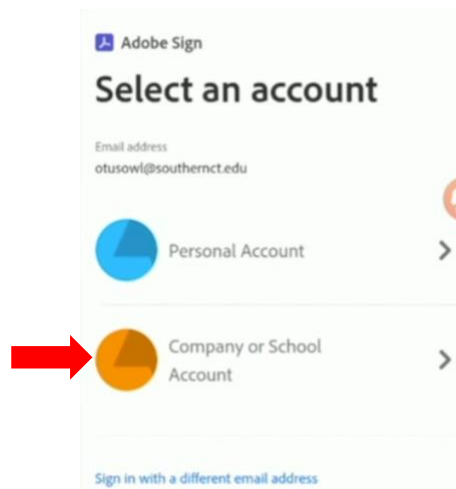
1. Select "Sign in".



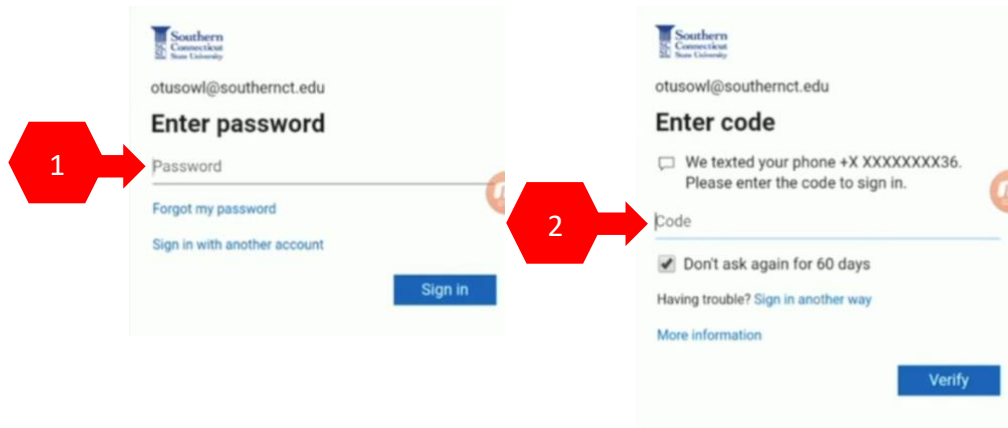
2. Enter your full SCSU email address. After moving to the password field, the page will proceed.



3. Select "Company or School Account".



4. Enter your password and authenticate your account.



5. From here, you may send documents for signatures or manage documents. For further information on these tools, see our full library of Adobe Sign tutorials.

