

**SCOPE OF WORK**

1. The work involves replacing toilet and shower partitions at 11 Bathrooms in Hickerson Hall, including the 5 gang bathrooms with showers. (There is a Supplemental Bid for replacement of the shower system including operator and pipe cover.) The supply piping from the back wall of **each** shower to the operator is being replaced as part of the Base Bid. The lights are also being replaced. The walls, ceilings, and various items in those 11 Bathrooms are being painted. Some grab bars are being removed, and some new grab bars are being installed – **See Toilet and Shower Stall Schedule on Sheet 2.**
  
2. Remove all existing toilet and shower partitions. Save the hardware, track, and ‘structure beams’, of the sliding doors at the toilets in Room 117 and 139. The sliding door panel itself is to be replaced in-kind. See Bathroom 139 Plan on Sheet 2. See notes on Shower System work below.
  
3. Shower Systems:  
[BASE CONTRACT]:  
At floors 2-6. remove existing surface mounted shower systems, including operator and pipe cover, from the shower partitions and save operator and pipe cover for re-installment. Re-install existing operator & pipe cover on new shower partition after re-plumbing.  
  
[SUPPLEMENTAL BID A]:  
At floors 2-6, remove existing surface mounted shower systems, including operators and pipe covers, from the shower partitions. Provide and install new shower system including operator and pipe covers. The Contractor shall be responsible for concealing any exposed piping with solid moisture and rust resistant material such as high-grade stainless steel or aluminum similar to the existing covers.  
  
[BASE CONTRACT & SUPPLEMENTAL BID A]:  
Remove existing shower supply piping from back wall to shower operator. Re-plumb new shower supply piping from back wall to shower operator.  
  
**See Outline Specification.**
  
3. Accessories and Grab Bars:  
Remove existing bathroom accessories, save for re-installment.  
Leave existing grab bars in place at existing walls. Loosen escutcheons so that painting can occur around grab bar attachment to wall. Remove all Pull Down grab bars and discard, patch wall. And some **NEW** grab bars will be installed. **See HC Stall Grab Bar Schedule on Sheet 2. See Grab Bar Elevations on Sheet 1.**
  
4. Install new toilet and shower partitions in same layout as existing toilet and shower partitions, including sliding door arrangement and additional door & partition at Rooms 117 and 139. For sliding door, re-use hardware, track, and ‘structural beams’ from existing sliding door arrangement – **See Bathroom 139 Plan on Sheet 2.**  
**See Toilet and Shower Stall Schedule on Sheet 2.**  
  
Provide shop drawings for toilet and shower partition layouts.

#### 5. PAINTING

The following items are to be painted:

Walls, Ceilings, Floors & Base (@ Basement Bathrooms only), Ducts, Doors & Frames (Both Sides), wood sills at windows & and mirror, heating units, and built-in trash receptacle.

#### 6. SINK & PLASTIC LAMINATE COUNTERTOP

The removals and replacement of this single sink & countertop at the 5 gang bathrooms will be handled by the University.



#### 7. LIGHTING

Mostly removal and replacement of existing light fixtures with similar LED light fixtures. There are some **NEW LIGHTS** at the 5 gang bathrooms. **See LIGHT SCHEDULE**

**GENERAL**

1. See **LIGHT SCHEDULE** for lights.

**TOILET PARTITIONS**

1. The toilet and the shower compartment shall be floor-mounted, overhead-braced, with non-corrosive doors ( @ toilets), panels, and pilasters, Hiny Hiders, as manufactured by Scranton Products Inc., Scranton, PA. All new hardware to be included, except for sliding door.
  - A. Dividing panels shall be 55" high and mounted at 14" above finished floor.
  - B. Doors shall be 55" and mounted at 14" above finished floor.
  - C. Pilasters shall be 82" high, mounted with a one-piece 3" stainless steel shoe with star-head security pin, stainless steel barrel bolts.
  - D. At each shower pillar, provide 2 coat hooks of heavy chrome plated zamak, similar to existing hooks. At each toilet partition door, provide one coat hook/bumper of same metal.
  - E. Door strike & keeper and door latch housing shall be fabricated from heavy aluminum extrusion (6463-T5 Alloy)
  - F. Continuous wall brackets and Headrail shall be heavy aluminum extrusion (6463-T5 Alloy).
  - G. Headrail brackets shall be 18-gauge stainless steel.
2. Finish of doors, panels, and pilasters shall be: Orange Peel
3. Color of doors, panels and pilasters to be BLUEBERRY
4. Layout of new partitions to match layout of existing partitions. Provide Shop Drawings including partition plan and elevation views.
5. For sliding door arrangement at HC Stalls at Rooms 117 & 139, new sliding door arrangement to match existing sliding door arrangement. Scranton Products will be providing only the door panel itself. Sliding door hardware, track, and structural 'beam' will be reused from existing sliding door arrangement.
6. Warranty: 25 years

**SHOWER OPERATOR**

1. [BASE CONTRACT]:  
At floors 2-6. remove existing surface mounted shower systems, including operator and pipe cover, from the shower partitions and save for re-installment.
2. [Supplemental Bid A]  
Shower Operator shall be Symmons Hydapipe, Model Number H901S, with attached soap dish and sloped metal top cap. Stainless steel covering to be 18 gauge with #4 brush finish, 20 gpm standard flow rate, 10 year Commercial Warranty.

**PAINTING**

1. **See Scope of Work:** Surface preparation and field application of paints and coatings.  
Preferred Manufacturer: Sherwin Williams
2. Finishes
  - A. Refer to schedule below for surface finish.
  - B. PAINTING SCHEDULE
    - a. Shower Wall and Floor:
      1. Primer – Touch-up with compatible primer.
      2. Decorative wall, two component epoxy: ¼” Resuflor Deco Flake BC
      3. Color: Sherwin-Williams: ‘Rebel Blue’
    - b. Drywall (Painted):
      1. Primer – B28W02600 – ProMar 200 Zero VOC Primer Interior Latex Primer, White.
      2. Two (2)Coats – B73W00361 – Pro Industrial Waterbased Epoxy Eg-Shel (Part A)
      3. Finish Color: Sherwin-Williams:  
Matching Benjamin-Moore “Glacier White”.
    - c. Steel/Ferrous (Painted & Unpainted):
      1. Primer – B66W01310 – PI PROCRYL PR OF W, White.
      2. Two (2)Coats – B73W00361 – Pro Industrial Waterbased Epoxy Eg-Shel (Part A)
      3. Finish Color: Sherwin-Williams:  
Matching Benjamin-Moore “Glacier White”.
    - d. Concrete Masonry Walls (Painted):
      1. Two (2)Coats – B73W00361 – Pro Industrial Waterbased Epoxy Eg-Shel (Part A)
      2. Finish Color: Sherwin-Williams:  
Matching Benjamin-Moore “Glacier White”.
    - e. Doors and Frames – Both Sides (Painted):
      1. Primer – B28W02600 – ProMar 200 Zero VOC Primer Interior Latex Primer, White.
      2. Two (2)Coats – B73W00361 – Pro Industrial Waterbased Epoxy Semi Gloss (Part A)
      3. Finish Color: Sherwin-Williams:  
Matching Benjamin-Moore “#997, Baja Dunes”.

**B. PAINTING SCHEDULE (CON'T)**

**f. Concrete Floor & Base (Painted):**

1. Two (2) Coats – B70W08111 – AS FPLX 8100 EXW A

(Add compatible Anti-Slip Additives, such as H&C SharkGrip or Armorseal Hi-Wear)

2. Finish Color: Sherwin-Williams:

Matching Benjamin-Moore - Match existing "Blue" color of floor.

**3. Surface Conditions**

- A. Correct conditions detrimental to timely and proper completion of work. Do not begin installation of any items until all conditions are correct.
- B. Verify that substrate conditions are ready to receive work and existing coating is solidly adhered to the substrate. Verify compatibility of paint specified with existing finishes.
- C. Remove loose and peeling paint. Sand surfaces and correct any unevenness.
- D. Correct minor defects and clean surfaces which affect work in this section.
- E. Remove or mask electrical plates, hardware, light fixture trim, escutcheons and fittings prior to preparing surfaces or finishing.

**LIGHT SCHEDULE**

- A 4' Linear Surface, (over sinks), Fail-Safe, HVSL8-4-LD4-1LO-40-UNV-O-EDC1
- B 2' Linear Surface, (over sinks), Fail-Safe, HVSL8-2-LD4-1LO-40-UNV-O-EDC1
- C Wide Body Surface, LED Wraparound, (Ceiling), Metalux,  
4WSNLED-LD4-32SL-F-UNV-L840-CD1-U
- Ca Wide Body Pendant, LED Wraparound, (Ceiling), Metalux,  
4WSNLED-LD4-32SL-F-UNV-L840-CD1-U  
Utilizing existing mounting hardware for pendant mounted fixture.
- D 14" Round Surface Downlight, (Ceiling), Halo, SMD14R209SWHE
- E 4' Surface Fluorescent (Ceiling, 1 - bulb), Metalux, 4VT3-LD5-4-G-UNV-L840-CD1-U

Bathroom 004 (Basement) 4 Type C

Bathroom 007 (Basement)

- Vestibule -1 Type D
- Bathroom - 2 Type Ca

Bathroom 104 (1<sup>st</sup> Floor)

- 3 Type B (Over Sinks)
- 2 Type D
- 1 Type C

Bathroom 107 (1<sup>st</sup> Floor)

- Vestibule -1 Type D
- Bathroom -1 Type B (Over Sinks)
- 2 Type C

Bathroom 117 (1<sup>st</sup> Floor)

- 1 Type A (Over Sinks)
- 3 Type E

Bathroom 139 (1<sup>st</sup> Floor)

- 1 Type A (Over Sinks)
- 3 Type E

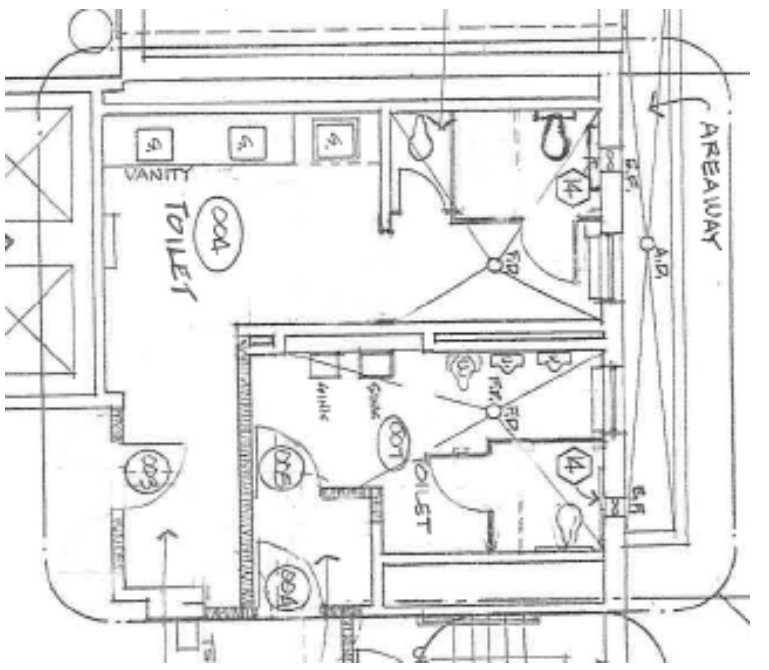
Typical Gang Bathrooms

(Floors 2, 5, & 6)

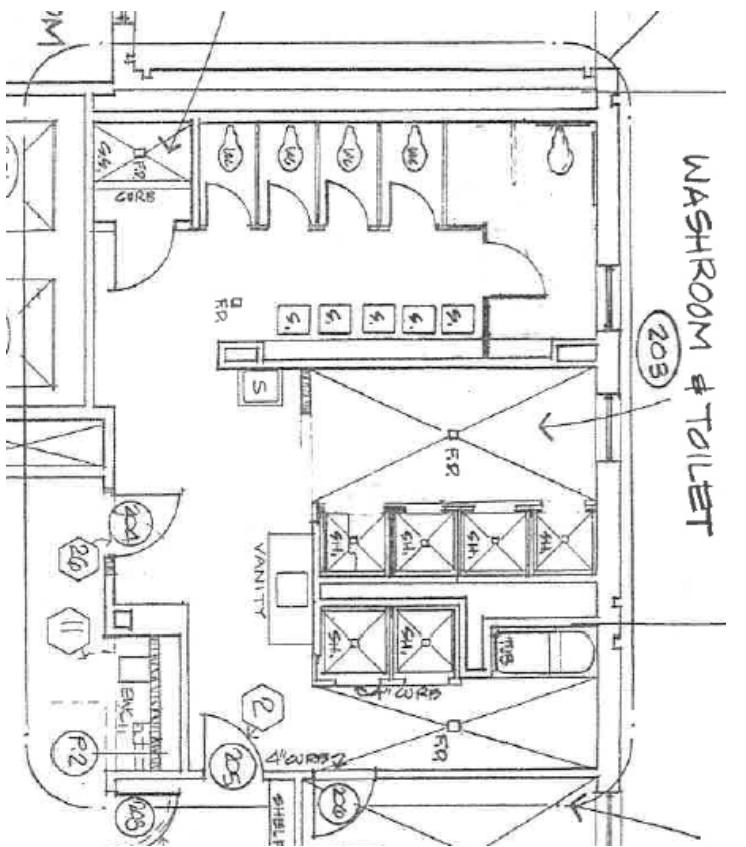
- Toilets – 2 Type A (Over Sinks)
- 2 Type E (At Ceiling, including HC Stall)
- NEW 1 Type E**  
**(At Ceiling Near Toilets in Missing Space, Existing Jct Box)**
- 1st Row of Showers – 2 Type E (At Ceiling)
- NEW 1 Type E (At Ceiling in Missing Space, Existing Jct Box)**
- Sink – 1 Type A (Over Sink)
- 2nd Row of Showers – 2 Type E (At Ceiling)
- NEW 1 Type E (At Ceiling in Missing Space, Existing Jct Box)**

(Floors 3 & 4)

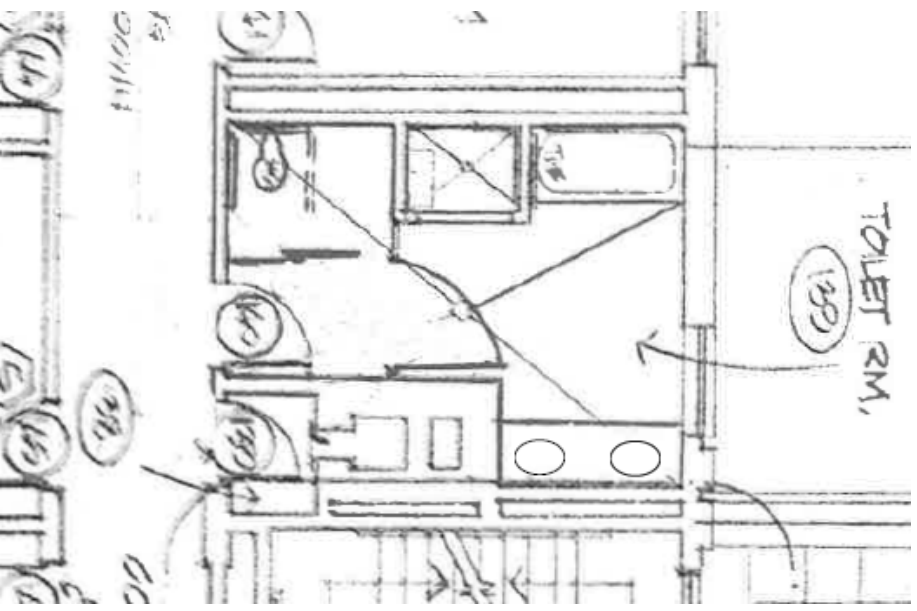
- Toilets – 2 Type A (Over Sinks)
- 2 Type E (At Ceiling)
- NEW 1 Type E (at ceiling, HC Stall, Existing Jct Box)**
- 1st Row of Showers – 2 Type E (At Ceiling)
- NEW 1 Type E (At Ceiling in Missing Space, Existing Jct Box)**
- Sink – 1 Type A (Over Sink)
- 2nd Row of Showers – 2 Type E (At Ceiling)
- NEW 1 Type E (At Ceiling in Missing Space, Existing Jct Box)**



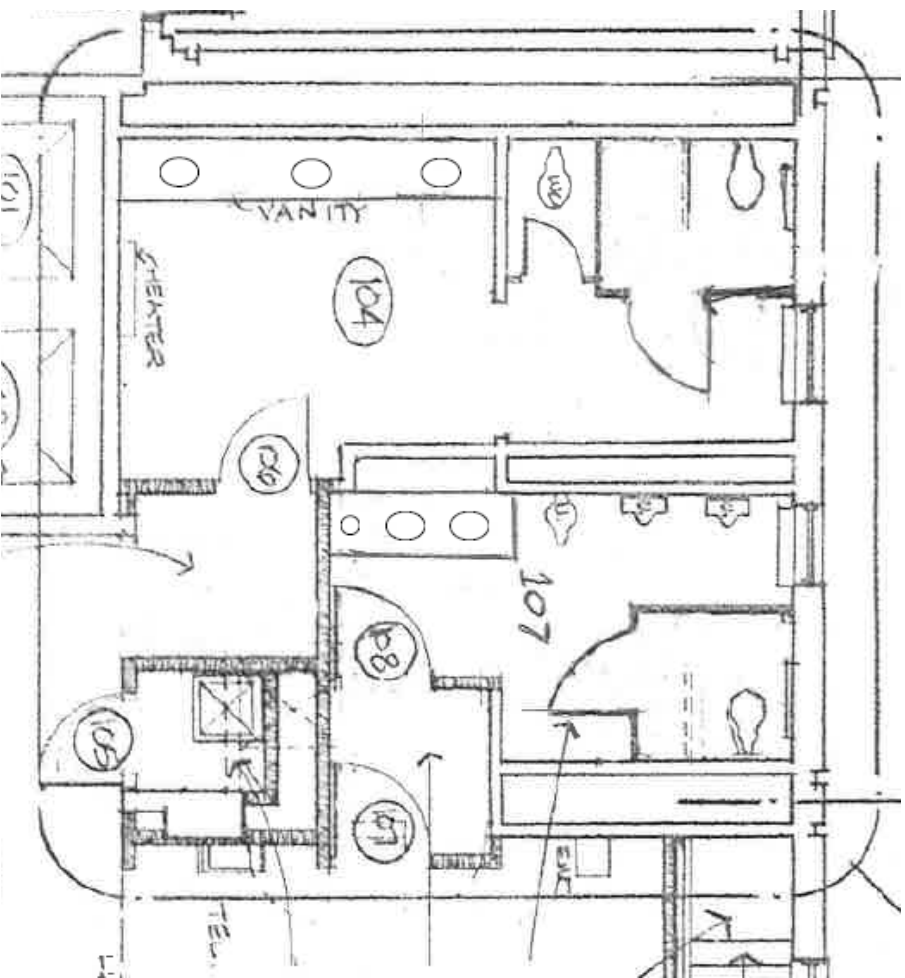
BATHROOMS 004 & 007



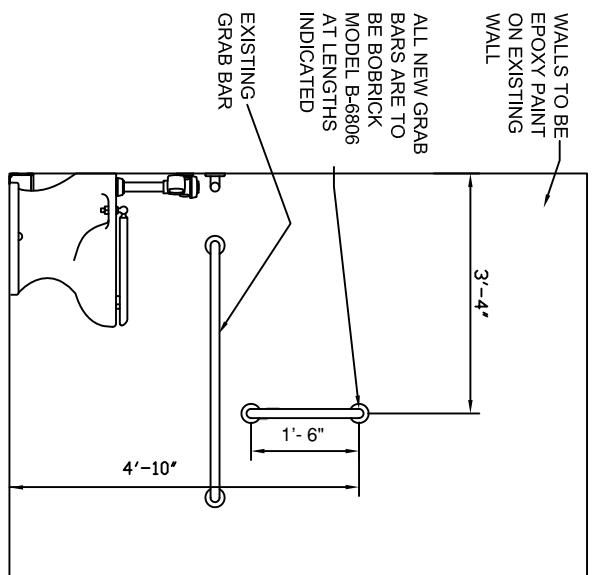
BATHROOMS FLOORS 2-6



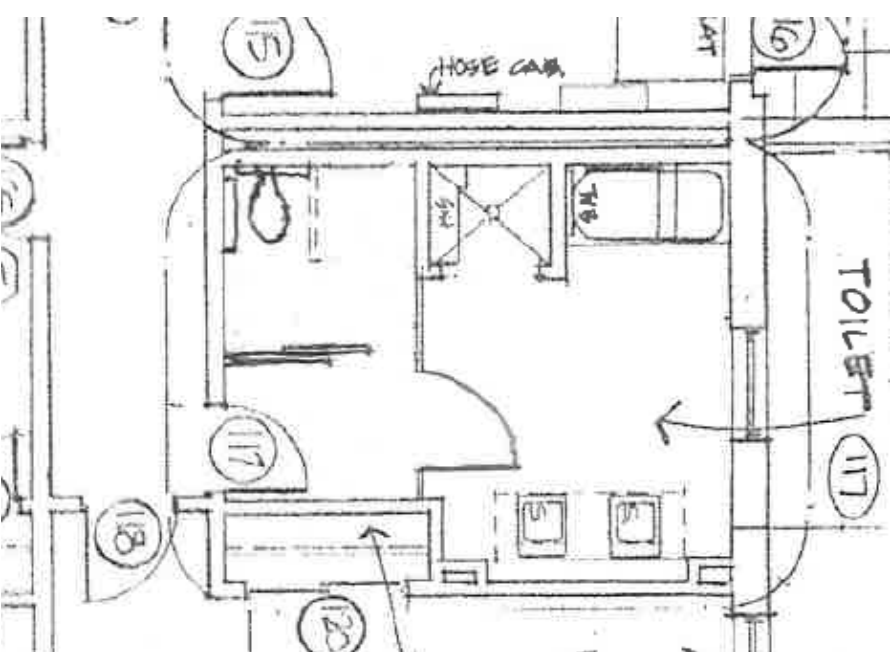
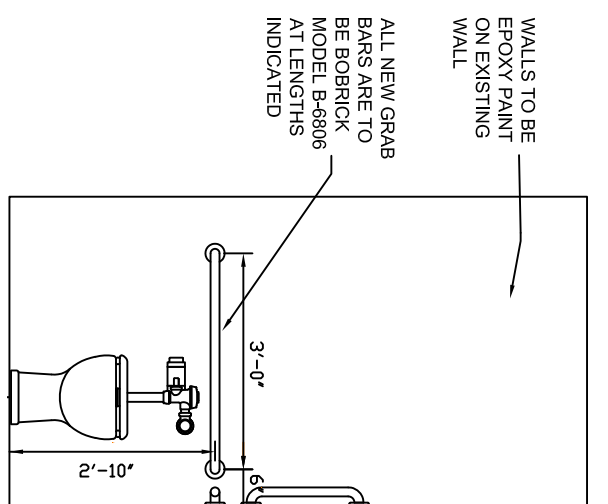
BATHROOM 139



BATHROOMS 104 & 107



GRAB BARS AT BATHROOM STALLS



BATHROOM 117

SHEET <b>1</b>	PROJECT NAME: HICKERSON HALL BATHROOM RENOVATION
	DATE: April 17, 2023
REV. 0	DRAWING TITLE: BATHROOM PLANS
	SCALE: NOT TO SCALE

SOUTHERN CONNECTICUT STATE UNIVERSITY

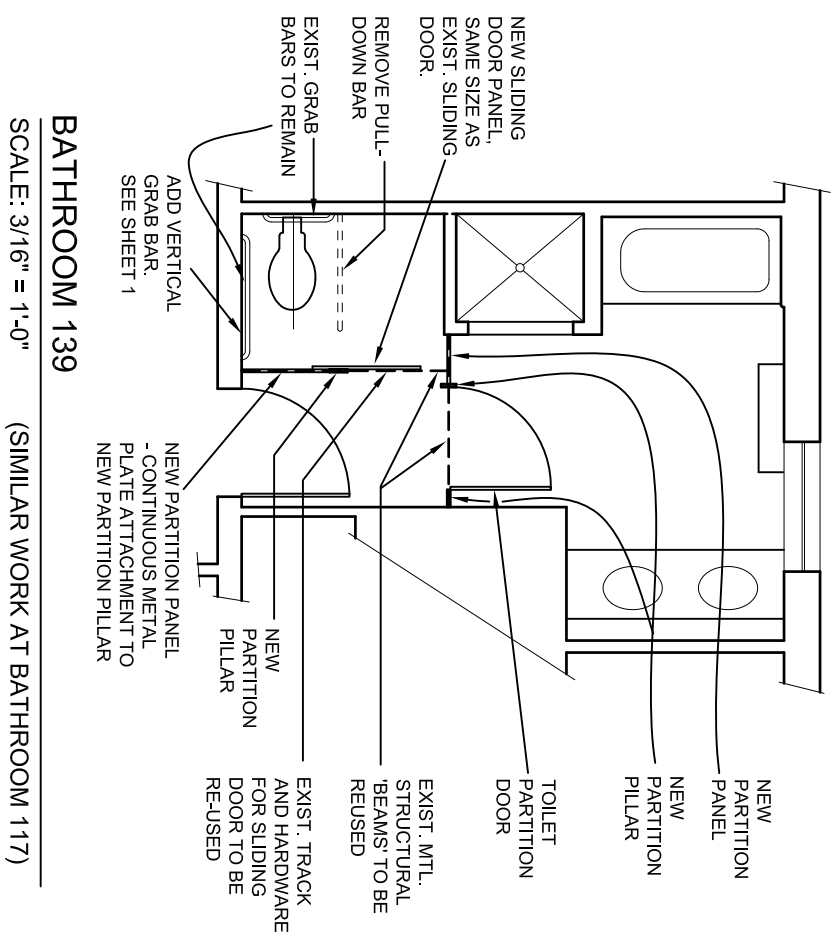
FACILITIES PLANNING DEPARTMENT  
615 FITCH STREET, HAMDEN, CT. 06514 TEL 203-392-6055



**TOILET and SHOWER STALL SCHEDULE**

**Stalls By Floor**

Bathroom 004 (Basement)	1 HC Stall (Typical: w/ Swinging Door) 1 Toilet Stall	
Bathroom 007 (Basement)	1 HC Stall (Typ)	
Bathroom 104 (1 <sup>st</sup> Floor)	1 HC Stall (Typ) 1 Toilet Stall	
Bathroom 107 (1 <sup>st</sup> Floor)	1 HC Stall (Typ)	
Bathroom 117 (1 <sup>st</sup> Floor)	1 HC Stall w/ Sliding Door & Another Partition w/ Door	
Bathroom 139 (1 <sup>st</sup> Floor)	1 HC Stall w/ Sliding Door & Another Partition w/ Door	
2 <sup>nd</sup> to 6 <sup>th</sup> Floor Bathrooms	Each Floor: 1 HC Stall (Typ) 4 Toilet Stalls 1 Janitor Stall <u>6 Shower Stalls</u> Total Stalls – 5 Flrs	Total for Flrs 2 – 6 (5 Flrs) 5 20 5 30 60
<b>Total Stalls – Building</b>		
HC Stalls (Typ)		9
HC Stall w/Sliding Door& Another Partition w/ Door		2 (Rms 117 & 139)
Toilet Stalls		22
Janitor Stalls		5
<u>Shower Stalls</u>		<u>30</u>
Total Stalls – Building		68



**HC STALL GRAB BAR SCHEDULE**

Bathroom 004 (Basement)	Remove Pull Down Bar Add Vertical Bar
Bathroom 007 (Basement)	Remove Pull Down Bar Add Vertical Bar
Bathroom 104 (1 <sup>st</sup> Floor)	Remove Pull Down Bar Add Back Bar
Bathroom 107 (1 <sup>st</sup> Floor)	Remove Pull Down Bar Add Back Bar
Bathroom 117 (1 <sup>st</sup> Floor)	Remove Pull Down Bar Add Vertical Bar
Bathroom 139 (1 <sup>st</sup> Floor)	Remove Pull Down Bar Add Vertical Bar
Bathrooms 2 <sup>nd</sup> to 5 <sup>th</sup> Floor (1 HC Stall @ Each Floor) (4 HC Stalls Total)	Remove Pull Down Bar Add Vertical Bar
<u>Bathroom 6<sup>th</sup> Floor</u>	<u>Add Vertical Bar</u>

Total HC Stalls w/ Grab Bars – 11

SHEET <b>2</b>	PROJECT NAME: HICKERSON HALL BATHROOM RENOVATION	SOUTHERN CONNECTICUT STATE UNIVERSITY
	DATE: APRIL 17, 2023	
REV. 0	DRAWING TITLE: BATHRMS 139(& 117) PLAN & SCHEDULES	FACILITIES PLANNING DEPARTMENT 615 FITCH STREET, HAMDEN, CT. 06514 TEL 203-392-6055
	SCALE: AS NOTED	